

# All is Normal

A Film by Todd G. Bieber and Juliana Brafa

## Press Kit

Contact:

[info@flexibleframe.com](mailto:info@flexibleframe.com)

Flexible Frame Productions

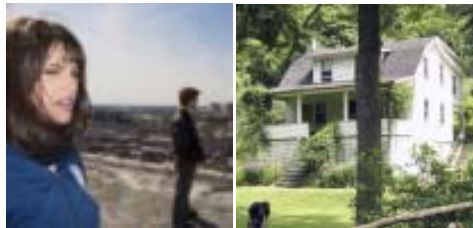
PO Box 168

Lewisburg, PA 17837

[www.AllisNormal.com](http://www.AllisNormal.com)



# About the Film



Starring emerging young actress Juliana Brafa and Academy Award Nominee and Golden Globe winner Linda Blair, this edgy thriller blurs the line between reality and one's own mental terror when Janet, a naïve college drop-out, tries to cut off from her sadistic boyfriend. Working as a house-sitter in a secluded Appalachian mountain home, she soon finds herself in a disturbing mixture of isolation, confusion, and murder.



Produced by award-winning filmmakers Todd G. Bieber and Juliana Brafa, the film also features Tom Stechschulte of the Denzel Washington film *The Manchurian Candidate*, and music by Grammy Award winning musician Steve Mitchell.



All is Normal has received coverage from news outlets all over the country including The Washington Post, the Chicago Tribune, The Miami Herald, The Houston Chronicle, and CNN to name a few. The film has also attracted international attention—in Canada, Mexico and throughout Europe. For more information, visit [www.allisnormal.com](http://www.allisnormal.com).

A Film by  
Todd G. Bieber  
& Juliana Brafa

All is Normal

## PRESS RELEASE:

"We made this film because the idea of running away struck a chord," says Juliana Brafa about her new film *All is Normal*. "It's not necessarily autobiographical, but at some point we all need to escape from something."

Written, directed, and produced by Brafa and her partner Todd G. Bieber, *All is Normal* is the pair's first feature.

The film centers around Janet (played by Brafa), a college drop-out who finds herself in a disturbing mixture of isolation, confusion, and murder when she takes a job as a house-sitter in an Appalachian mountain home to escape from her sadistic boyfriend.

Academy Award nominee and Golden Globe winner Linda Blair (*The Exorcist*) plays Janet's counselor.

"We thought that Linda Blair would be perfect for the role," says Bieber. "An actress who played the classic victim is now playing a role of strength in the same genre over thirty years later."

In addition to Blair, the primary cast includes Duane Wallace, Kyle Brosius, Greg Burgess, and Tom Stechschulte (*The Manchurian Candidate*, 2004).

The film was shot in the wooded hills of Pennsylvania, and Bieber sought to convey the environment's sense of isolation through his photography.

"We tried to create a look that brings across a sense of both vastness and claustrophobia," says Bieber. "The rural landscape can feel both beautifully serene and very ominous, and we wanted to capture that."

Underscored with music from a variety of musicians including Seattle-based band Botch and Grammy-award winning musician Steve Mitchell, the sounds of the film are what Brafa describes as "organic and full of tension."

"We want this film to rouse people's fears, but we don't want to constantly conform to the typical methods of the thriller-horror genre," says Brafa. "We are greatly influenced by the masters of suspense movies, but we also try to push the boundaries."

Bieber and Brafa have won several awards for their past short films (*One Number 2*, *Neck Deep*) and have created various other works including a music video for Cursive and a spot featuring Martin Scorsese for the Lake Placid Film Festival.

They plan to take *All is Normal* on the 2006 film festival circuit in search of distribution. Go to [www.AllisNormal.com](http://www.AllisNormal.com) to view the film's teaser and preview.

[www.AllisNormal.com](http://www.AllisNormal.com)



# The Washington Post

## Linda Blair Working on Independent Film

Lewisburg, PA—Linda Blair has been turning heads in this small central Pennsylvania town. Blair, best known for her role as a demonically possessed 12-year-old in 1973's *The Exorcist*, is working on an independent film written, produced and directed by Lewisburg natives Todd G. Bieber and Juliana Brafa.



Photo by Sire Advertising.

She plays a social worker who is helping a young woman escape from her violent boyfriend in the psychological thriller titled, *All Is Normal*.

Bieber and Brafa, who have collaborated on several short films, sent Blair a copy of the screenplay after meeting her at a film festival last year.

"They were very persistent," Blair said, laughing. "They didn't stop writing or calling."

The 46-year-old actress said she was proud of appearing in *The Exorcist*, but had little to do with how it turned out.

"I didn't create it," she said. "I'm proud, but I have so much left to accomplish in my life."

Bieber and Brafa said they were thrilled to work with Blair on their first full-length movie. "I didn't think we expected to grow as much as we have in the last five days," Bieber said Tuesday. "It's going to benefit us for the rest of lives to have the experience working with Linda."

This Associated Press Article from July 2005 appeared in the following publications as well as others across the nation. News of *All is Normal* even reached Canada, Mexico and throughout Europe.

Chicago Tribune

The Miami Herald

The Houston Chronicle  
Your daily information source

The Philadelphia Inquirer

CNN

YAHOO!

msn.

Newsday

abc

A Film by  
Todd G. Bieber  
& Juliana Brafa

All is Normal



# Character Profiles



## **Juliana Brafa as "Janet"**

### **Co-writer, Co-director, Producer**

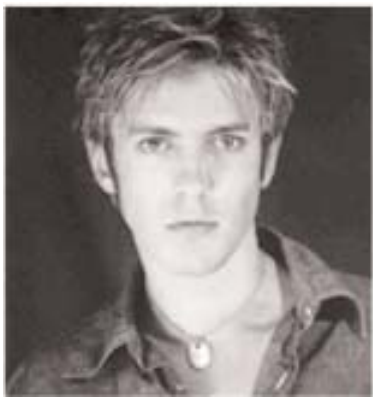
As co-founder of Flexible Frame Productions, Juliana Brafa contributed her talents both off and on-screen with her role as lead character Janet. Janet is a college dropout trying to escape from her sadistic boyfriend, Bruce. Brafa, a graduate of Bucknell University, holds dual degrees in English/Creative Writing and Theatre, with dual minors in Women's and Gender Studies and Film Studies. She has won several awards for her creative writing works. Brafa and partner Todd Bieber started Flexible Frame Productions in January 2004.



## **Linda Blair as "Barbara"**

Seasoned actress Linda Blair took on the role of Barbara, the social worker who helps Janet escape her abusive relationship. Blair has appeared in more than 75 commercials and been featured on hundreds of magazine covers. She is best known for her role as Regan, the possessed teenager in *The Exorcist* (1973). Her performance earned her an Oscar nomination and a Golden Globe award in the Best Supporting Actress category.

The character of Regan was also ranked ninth on the American Film Institute's Top 100 Movie Villains. Blair reprised the role in the 1977 sequel, *Exorcist II: The Heretic*, and the 1990 parody *Repossessed*. Her career has also included television series work and stage roles. An avid animal rights activist, Blair founded the World Heart Foundation in 2003 to help prevent animal abuse.



## **Duane Wallace as "Bruce"**

Cast as Bruce, Janet's violent boyfriend, Duane Wallace has acted in a number of independent films. He previously had roles in Flexible Frame Productions' *One Number 2* and *White Swans* on *Black Velvet*. Appearing in a scene with Leonardo DiCaprio in the Oscar-nominated *Catch Me If You Can* (2002) also gave Wallace widespread exposure. Wallace, who enjoys working both on stage and in film, began acting as a young boy. He holds a B.A. in Theatre Arts and an M.S. in Instructional Technology from Bloomsburg University.

He found his role as Bruce significant, saying, "I think that more people need to realize the complexity of domestic abuse and how individuals can get trapped by nostalgia and their emotions." Wallace lives with his wife Desaree and their dog, Dude, in northeastern Pennsylvania.



# Character Profiles Cont.



## **Tom Stechschulte as "Dr. Bradshaw"**

Cast as Dr. Bradshaw, the kindly physician who cares for Janet when she falls ill, Tom Stechschulte is a versatile actor who has appeared in film, television, and stage productions for more than 20 years. Stechschulte took on the role of the President of the United States in 2004's critically acclaimed *The Manchurian Candidate*, and has also appeared on screen in *Murder in Small Town X* (2001) and *What About Bob* (1991). He has guest starred on several episodes of NBC's hit crime drama "Law & Order," and performed in nine Broadway productions, including "Voices in the Dark" (1999), "Inherit the Wind," (1996) and "Cat on a Hot Tin Roof" (1990). He is also the narrator of many audio books.



## **Greg Burgess as "Paul"**

Musician Greg Burgess plays the role of Paul, a sleazy realtor who hires Janet to housesit one of his properties. In addition to acting, Burgess showcases multiple talents as the pianist, vocalist, songwriter, and musical leader of the central Pennsylvania blues and jazz combo Burgess, Mitchell and Seal. Burgess holds degrees from Penn State University and State University of New York at Binghamton, and enjoys writing poetry and fiction. He has also published several articles in *Indian-Artifact Magazine*, which documents and discusses prehistoric Indian findings throughout the United States. Married to fiddler Beverly Conrad, Burgess has two children, Joslyn and James.



## **Kyle Brosius as "Woody"**

Central Pennsylvania native Kyle Brosius plays Woody, the lawn caretaker who befriends Janet. Kyle previously starred in several past projects for Flexible Frame Productions, including *One Number 2* and *Help Wanted*. A professional drummer, he performed several percussion pieces for the soundtrack of *All is Normal*. In his spare time, Kyle enjoys riding his BMX bike throughout the Susquehanna Valley.



# About the Filmmakers

A Film by  
Todd G. Bieber  
& Juliana Brafa

All is Normal



Todd G. Bieber and Juliana Brafa have produced over 15 short films and music videos, and in January 2004 they co-founded their independent production company, Flexible Frame Productions, LLC. The couple's versatile abilities include writing, directing, acting, producing, and editing.

Highlights of their work include the award-winning short Neck Deep, the multiple award-winning short film One Number 2, a music video for Cursive, and a promotional spot for Lake Placid Film Festival featuring Bill Plympton and Martin Scorsese.

The duo will be taking All is Normal, their first feature film, on the film festival circuit next winter in search of distribution. More information can be found on the film's web site, [www.allisnormal.com](http://www.allisnormal.com).

Bieber graduated from Bloomsburg University with a degree concentrating in film and communications. Brafa, a recent graduate of Bucknell University, holds dual degrees in English/Creative Writing and Theatre, with dual minors in Women's & Gender Studies and Film Studies. She has won several awards for her creative writing works. Bieber and Brafa currently run Flexible Frame Productions full time.

# Past Reviews and Recognition

**One Number 2** (Directed by Todd G. Bieber and Juliana Brafa, 20 minutes)

" Carefully constructed and immensely intriguing."  
- Ryan Cracknell, Movie View Film Critic

" ... excellent and intriguing..."  
- Widget, Need Coffee Film Critic

" Refreshing"  
- Dragan Antulov, Croatian edition of "Total Film" magazine

" A masterpiece on a shoestring budget"  
- Ryan Hall, The Standard Journal

" One Number 2 has kinetic energy (like Scorsese's pictures) , intelligent writing (like Smith's), and a masterful ability to alter pacing (which Tarantino so brilliantly did with Kill Bill Vol. I) ."  
- Mike McGranaghan, Film Critic for www.aisleseat.com

"4STARS" " The real stars are the directors and their inventive cinematography... Weaving a variety of disjointed scenarios and characters through the pencil metaphor, the film provides enough fodder for English majors to wax prosaic about the meaning of life... Filmmakers that can pull off surprisingly strong production values on such a bare-bones budget and market their own DVD are to be reckoned with."  
- John Nesbit, Film Critic for Culture Dose

#### Awards:

First Place Winner, Marco Island Film Festival 2003  
First Place Winner, Café Metropolis Film Festival 2004  
Second Place Winner, Muskegon Film Festival 2004  
Special Jury Prize, Harrisburg Artsfest Film Festival 2004

**Neck Deep** (Directed by Todd G. Bieber, Produced by Juliana Brafa, 5 minutes)

#### Reviews:

"... be on the lookout for Neck Deep and do what you must to see it."  
-Aisle Seat Film Critic Mike McGranaghan

" A lot of heart and charm... An all around good short."  
-Ain't It Cool News

#### Awards and Recognition:

Viewers Voice Award, Cinequest San Jose Film Festival 2005  
Official Selection, Palm Beach International Film Festival 2005  
Official Selection, New Orleans Film Festival 2005  
Official Selection, Harrisburg Artsfest Film Festival 2005  
Official Selection, West Chester Film Festival 2005  
Official Selection, Orinda Film Festival 2005



A Film by  
Todd G. Bieber  
& Juliana Brafa

AllisNormal

# Behind the Scenes Facts

Excited for the release of All is Normal? Of course you are. Take a look a few All is Normal cast, crew, and filming facts. We hope these will hold you over until the film's release. Enjoy!

- All is Normal actress Linda Blair is a vegan and wrote a book on the topic titled "Going Vegan!"
- If you thought that was interesting... filmmaker Juliana Brafa (also main character Janet) decided to become vegan after meeting Blair. She was already vegetarian, and considered going vegan in the past. After Blair confirmed her involvement with the film, she finally decided to make the move.
- Duane Wallace (who plays Bruce in the film) appeared in a scene with Leonardo DiCaprio in Steven Spielberg's Academy Awarded-Nominated crime drama Catch Me If You Can.
- Blair is no stranger to the red carpet. She's been in the spotlight as a model and actress from the age of 6, when she was chosen from 600 applicants to play Regan in The Exorcist.
- Juliana Brafa (All is Normal actress and filmmaker) won several awards for creative writing while a student at Bucknell University in Lewisburg, Pennsylvania.
- Tom Stechschulte (All is Normal's Doctor Bradshaw) played in What About Bob, a 1991 comedy with Bill Murray and Richard Dreyfuss. Stechschulte played Lennie, a "Good Morning America" producer.
- Blair began The World Heart Foundation in 2003, a charitable organization dedicated to preventing animal abuse. Blair won awards for her work as an animal rights activist from organizations such as P.E.T.A. (People for Ethical Treatment of Animals).
- All is Normal was filmed over the course of one year, and the filmmakers suffered through shooting in both extremes of weather—Blair had heat exhaustion, and Brafa was frostbitten.
- His role as Doctor Bradshaw in All is Normal isn't the first time Stechschulte played a physician on the big screen. In 1979, he played Doctor Anderson in an episode of "The Incredible Hulk."
- Since 1996, Stechschulte has appeared on "Law & Order" in four different episodes.
- During the production of the film, Blair and Brafa took jobs as house sitters—just like the main character (Janet) in the movie. Yet another coincidence—it was the very same house that was featured in All is Normal.

If this didn't satisfy your All is Normal appetite, take a look at the film's teaser by visiting [www.allisnormal.com](http://www.allisnormal.com).

Photo Credits: Matthew S. Nagy, Duane Wallace, Mike McGranaghan, Sire Advertising  
For High Resolution Images please contact Flexible Frame Productions at [info@flexibleframe.com](mailto:info@flexibleframe.com)

A Film by  
Todd G. Bleber  
& Juliana Brafa

All is Normal

